

ELESONICTM

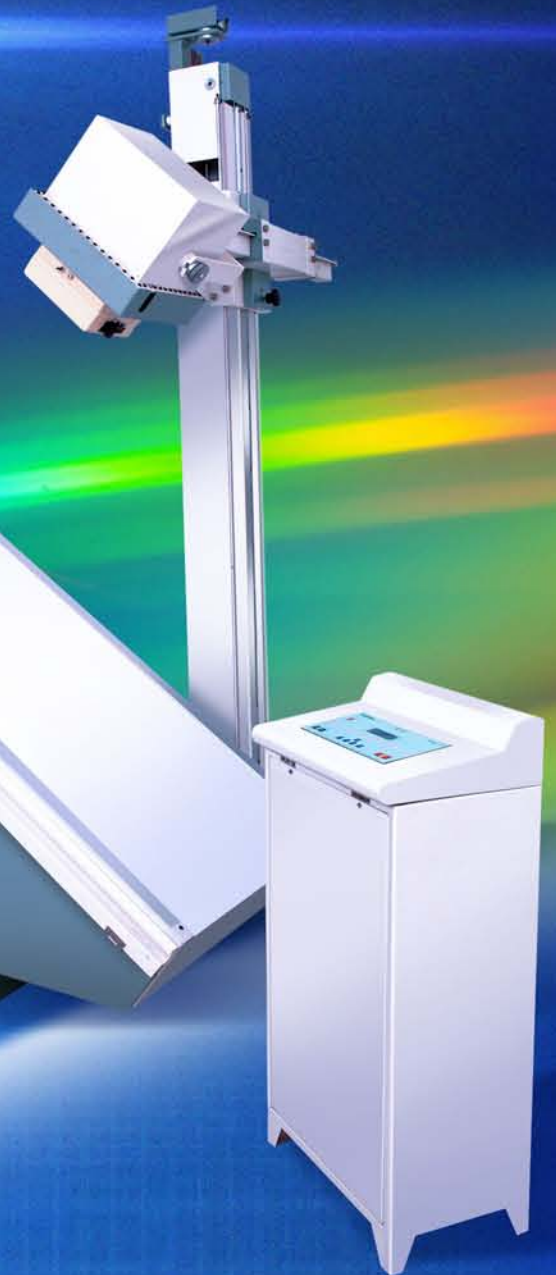
Helping Make Lives Better

— A NSIC-CRISIL rated company —

www.elesonicgroup.co.in

www.elesonic.co.in

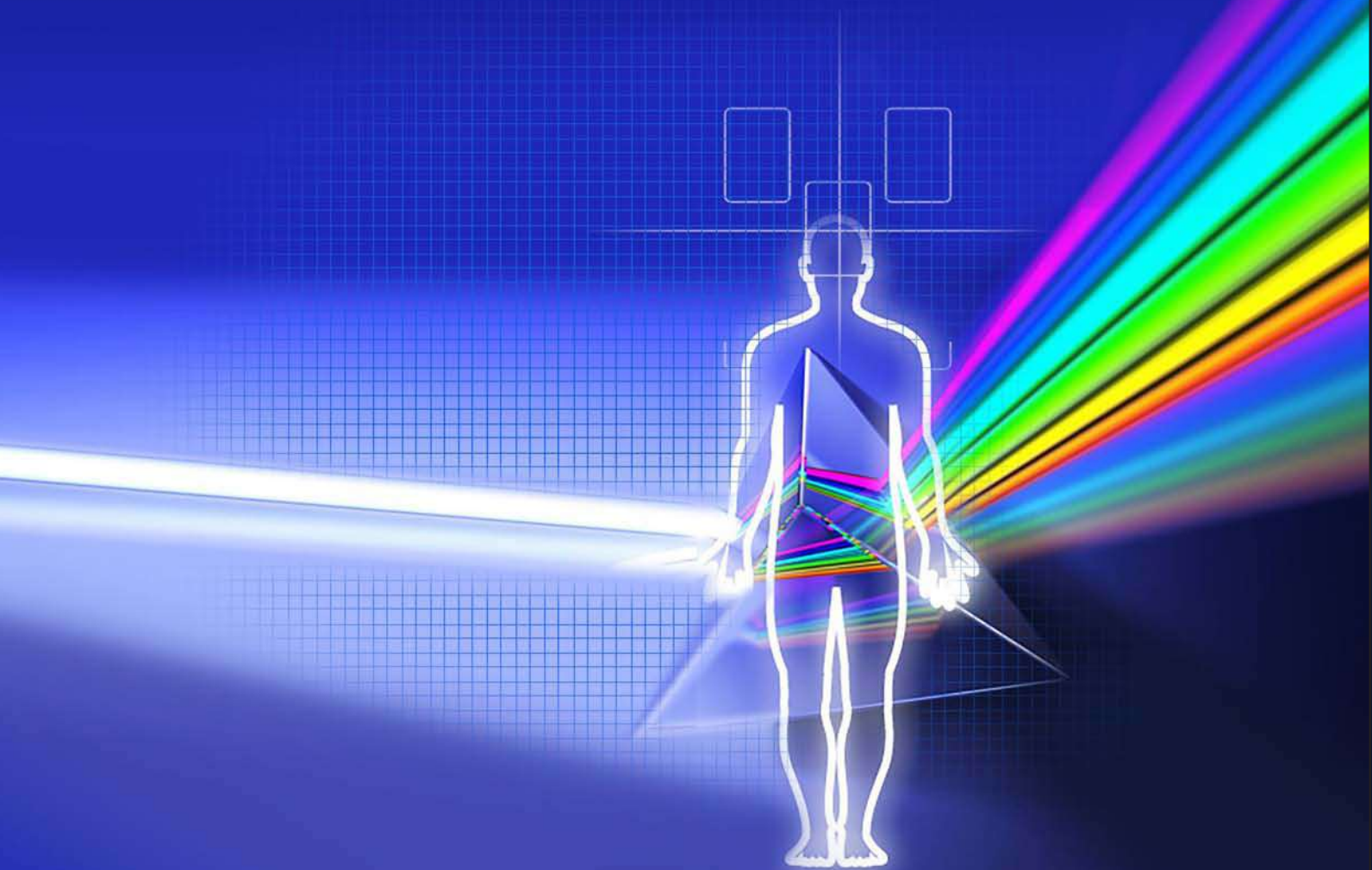
Imaging the Invisible



“One Picture Worth Ten Thousand Words.”

~ Chinese Proverb

The idea of looking at, analysing, and constructing human body experienced a revolution, thanks to unique vision of Leonardo da Vinci, who appreciated the above words with utmost sincerity. His study of anatomy, originally pursued for his training as an artist, had grown by the 1490s into an independent area of research. As his sharp eye uncovered the structure of the human body, Leonardo became fascinated by the “figura istrumentale dell' omo” (man's instrumental figure), and he sought to comprehend its physical working as a creation of Nature. It took three more decades before human civilisation benefited from such spirited thoughts and courtesy a certain physicist Wilhelm Conrad Röntgen was blessed with the discovery of x-ray. The journey of imaging the invisible transformed forever. At Elesonic, these 'life changing' stories and their transformational values to human life has made a deep, inspiring, and profound impression. In fact, our raison d'être remains to create imaging solutions for the healthcare domain that constantly 'check', 'improve', and 'enhance'. Transforming the invisible into the visible... creating tools that helps create safe, unique, and eco-friendly prisms to imaging.





Elemac 50: 50mA Portable, full-wave, rectified X-Ray Machine

Key Features

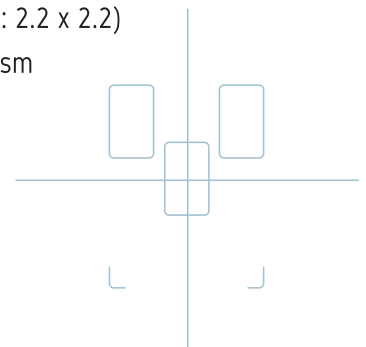
- Microprocessor-based full Digital Control
- Feather Touch control panel with Digital Display
- LCD Indication of all selected parameters: KV, mA, Seconds, and mAS
- KV selection in increments of 1 KV for excellent control on image contrast
- Remotely (wired) controlled two position X-Ray exposure switch
- Microprocessor-based, Electronic Overload Protection system enabling Dynamic Overload Control of Selected parameters for protection of Tube Insert
- Power Input: Single phase 230 V, 50Hz

Specifications

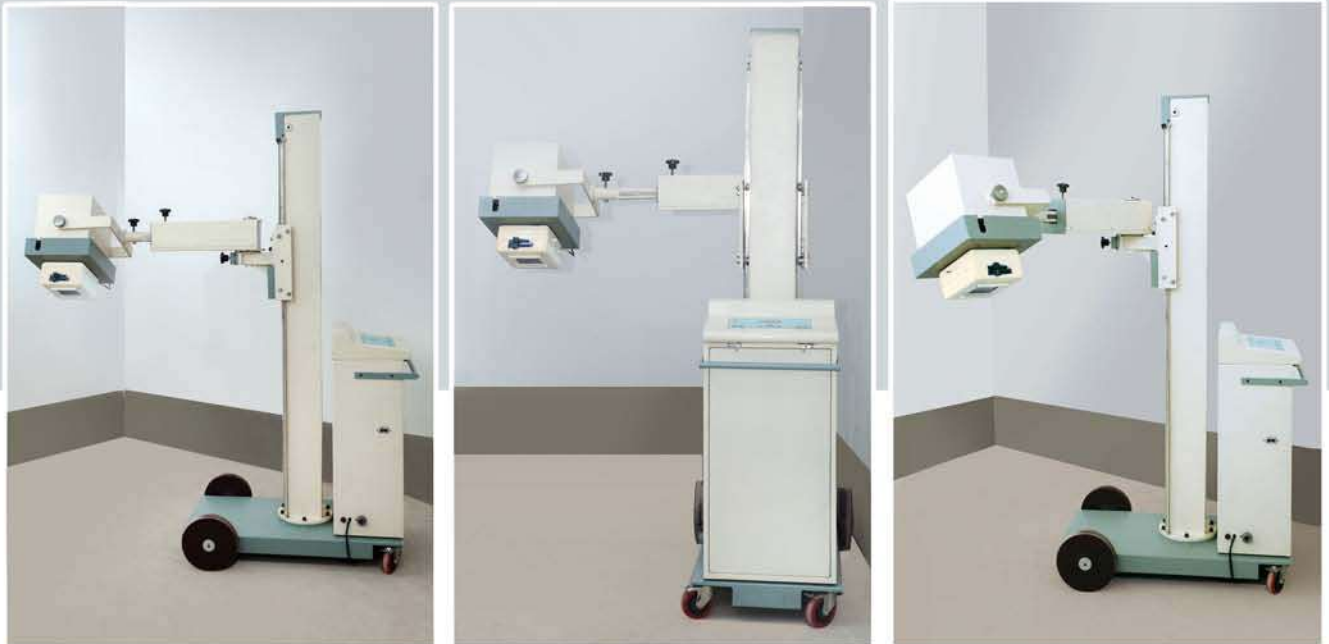
- X-Ray Tube Head with Stationary Anode Tube Insert (Focal Spot: 2.2 x 2.2)
- Two-section portable tube stand with 'teeth and worm' mechanism
- Dental X-Ray facility

mA Stations

- 50 mA at 50,55,60 Kvp for 5 seconds
- 40 mA at 65,70,75 Kvp for 5 seconds
- 30 mA at 80,85 Kvp for 5 seconds



ELESONIC™



Elemac 100M (Mobile) & Elemac 100 (Static): 100 mA Microprocessor-based X-Ray Machine Generator

Elemac 100 is a 100 mA X-Ray generator based on a powerful microchip. It is programmed to make seamless and automated operations with 'near zero' precision. Elemac 100's overload protection is built into the basic programme of the Unit. This makes it safe for both the machine and the operator. Elemac 100 has a cooling period of 1 minute between two exposures. Its incoming mains supply is automatically adjusted within a range of 180 to 250 V. The microprocessor-based timer is programmed to give a minimum exposure of 1 mAs.

Key Features

- User-friendly Control Panel
- Standard signs on Panels eliminate language muddles
- Sequential location of switches for correct and linear operation
- Clutter-free arrangement of switches and meters and bulbs
- Feather Touch electronic switches for smooth operations
- Absence of rotary and mechanical switches reduces wear-and-tear problems
- Feather Touch control panel with digital display
- LCD indication of all selected parameters: KV, mA, Seconds and mAs

Specifications

- Radiographic Voltage: 45 KVP to 100 KVP (In 61 Steps of 1 KV each)
- Radiographic mA: Four stations (25 mA, 50 mA, 75 mA and 100 mA)
- Direct Setting of mA Values: 1 mAs to 500 mAs in 500 steps, each of 1 mA
- X-Ray Tube: Stationary Anode (Focal Spot: 2.8 x 2.8) or Rotating Anode on demand

Digital Display

Microprocessor-based digital control with preset KV, mA & Seconds, and Radiography mAs.

Mobile Stand

It is a ruggedly built mobile stand with counter balanced up-down travel of cross arm enabling 7 ft floor to focus distance. The stand moves on heavy duty castor wheels. The width of the base is 30 inches and height of the column is 6 ft. The cross arm is folding type enabling easy mobility.

ELESONICTM



ELESONIC[®]



Elemac-Ti & Elemac 100: 100 mA Microprocessor-based Fixed X-Ray Machine with 7-Position Tilting Bucky X-Ray Table

Key Features

- 7-Position tilting Table movable from Trendelenberg (-15°/0°/15°/30°/45°/60°/90°) with electrically operated Bucky
- Self-Centering Cassette Tray & Bucky Grid (Optional)

Elemac-PL & Elemac 100: 100 mA Microprocessor-based Fixed X-Ray Machine with Horizontal Bucky X-Ray Table

Key Features

- Horizontal Table with Oscilating Bucky
- Self-Centering Cassette Tray & Bucky Grid (Optional)





ELESONICTM

ELESONIC GLOBAL NETWORK

Elesonic Medical Systems

Global Headquarters

Primarc Tower, Unit no-702, 7th Floor, Sector-V, Salt Lake City,
Kolkata - 700091, India

Elesonic Medical Systems Canada Inc.

2000 McGill College Avenue, 6th Floor, Montreal, Quebec,
H3A 3H3, Canada

Elesonic Medical Systems Nigeria Ltd.

Lagos, Nigeria, Phone: +91-9831850125

kaushik@elesonicgroup.co.in • elesonic@rediffmail.com

• kaushik@elesonic.ca • www.elesonicgroup.co.in • www.elesonic.ca

Nigeria - Local Contact: Harshit Vasavada, Ph: 234 81 23198884

ELESONICTM

Manufactured & Marketed by:

Elesonic Healthcare Private Limited

Saheban Bagicha • PS: Nodakhali

Bakrahat • PO: Muchisa • South 24 Parganas

West Bengal 743377 • India

Phone: +91-33-2470 0066

Email: elesonic.healthcare@gmail.com,

sales@elesonic.co.in

Self declaration: BIS-IS-13450(Part-2): 2016 Compliant

AERB(BARC) Type:

Channel Partner
Stamp: